



**An Extraordinary  
Vision Renewed.**



An Extraordinary  
Vision Renewed.

# Mariemont Centennial Commemoration Projects

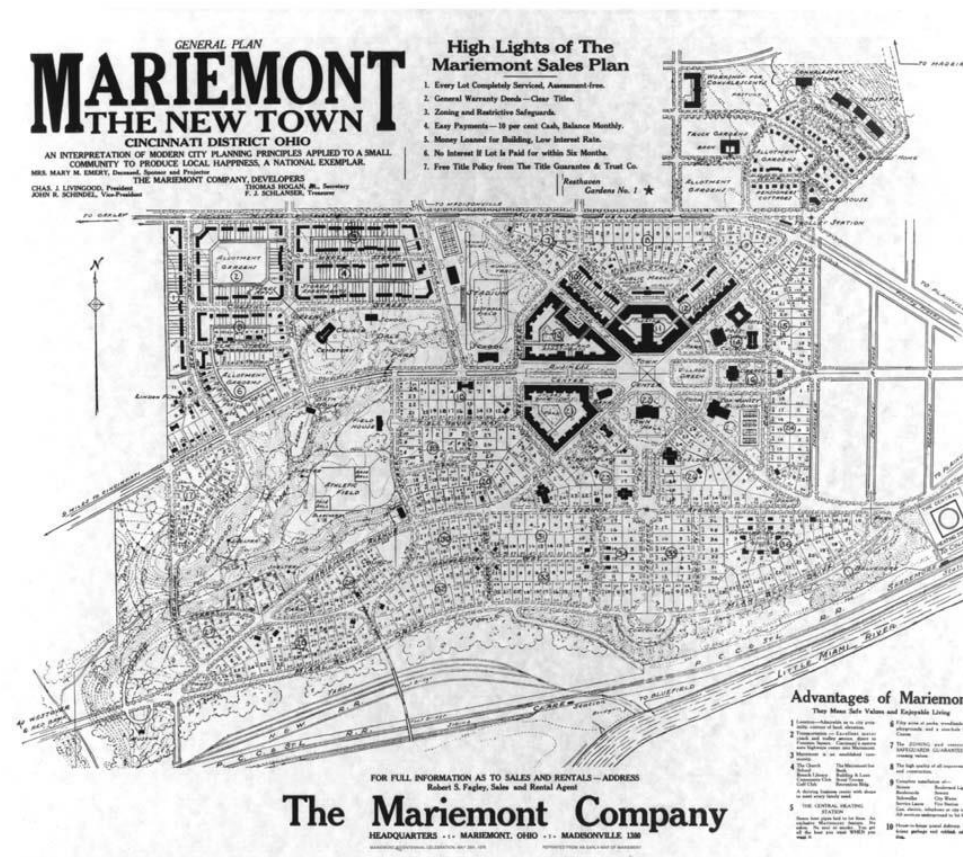
*This is our 100th anniversary and the best chance in our lifetimes to do something meaningful and significant for Mariemont.*

# Mary Emery's Vision for a "National Exemplar" Town

During the early 1900s, Mary Emery, began to envision what would become Mariemont. Appalled by the unsanitary housing conditions in downtown Cincinnati, she was determined to use her vast fortune to establish a "model town" which would be planned in every detail to provide its residents with a high quality of life.

On April 23, 1923, Mary Emery turned the first spadeful of earth as the construction of Mariemont, a "National Exemplar" in practical town planning began. Her goal was to create an ideal, country-like setting with modern amenities to benefit the working-class family, and most especially children. Hence the village motto – "dedicated to youth."

- Mariemont was listed on the National Register of Historic Places, July 24, 1979.
- In 2007, the Village of Mariemont was designated a National Historic Landmark.
- In 2008, the American Planning Association designated Mariemont a "Great Neighborhood".



# The Village and Mariemont Preservation Foundation Working Together

Providing outdoor spaces for the health and enjoyment of the residents of Mariemont were always at the forefront of Mary Emery's vision for her new town.

To honor this rich heritage and as a prologue to the next century we are upgrading our parks and green spaces to insure that the residents of Mariemont and the surrounding community will continue to benefit from her legacy. Centennial projects will focus on enhancing the health and wellness benefits of our parks and recreational areas.

The projects will be designed to be multi-generational and contribute to the tradition as a walking community where residents can age in place.

## Major Projects to Commemorate the Centennial include:

- The Rehabilitation of Dogwood Park
- The Preservation of the Family Statuary Group and the Renovation of Dale Park.
- The Construction of an Amphitheater at Dale Park
- The Rehabilitation of the Historic Street Lights
- Updated Gateway Signage package



An Extraordinary Vision Renewed.



# Dogwood Park is the Largest Park in the Village

## The 20-acre park currently features:

- A forest preserve maintained as a bird and wildlife sanctuary complete with hiking trails through Whiskey Creek that connect to the South 80 trails.
- The Mariemont Carillon. The soaring Bell Tower is one of only a few working carillons in North America. Regular concerts are given by the carillonneurs each Sunday throughout the year and on principal holidays.
- A fenced in tot-lot with age-appropriate equipment, three baseball fields and two soccer fields.
- Two community shelters for picnics and community events.
- Beyond the weekly carillon concerts, other events that take place in the park include the annual Taste of Mariemont, 4th of July fireworks, The Warrior Run 5k, baccalaureate, and baseball and soccer practice and games.



# Added Features and Revitalized Resources Will Enhance Activities



## New Features and Renovation will include:

- Construction of a walking path around the perimeter of the park. This walking path would connect to the Whiskey Creek hiking trails.
- The repositioning and rebuilding of the three baseball diamonds, located in the park. The baseball diamonds would be repositioned to provide for a green space and a clear vista to the Carillon Tower.
- The installation of a limestone entrance plaza to the Park.
- The expansion and repositioning of the parking lot.
- The installation of historical informational plaques on the history mechanics, and operation of a carillon.
- Sidewalk connection to Wooster Pike and spur to connect to the Boathouse
- The planting of a dogwood tree grove
- The repositioning of the tot-lot
- Restoration of the lawn and drainage



# Dale Park Represents the Strength of Family

## Family Statuary

- The Family Statuary Group depicts three generations of a French peasant family. Carved in Paris out of French limestone, the statuary group entitled A L'Enfance ("to Childhood") by sculptor Lucien Alliot was commissioned by the Mariemont Company in February of 1928.
- Unfortunately, environmental factors have dramatically deteriorated the Family Statuary.
- Preservation experts agree that to survive, it would need to be cleaned, repaired, and covered.



# Dale Park Represents the Strength of Family



## Preservation and Renovation would include:

- Cleaning and repairs to the Family Statuary and supporting structures
- The construction of a shelter over the Family Statuary Group to preserve the statuary from further damage
- Updates to the surrounding park and plantings to provide a more open and inviting environment
- A new entrance would be constructed and the park would be rededicated as the Mary Emery Centennial Park.
- The addition of educational signage to include an historic timeline of the surrounding area starting with the late Fort Ancient culture (AD 1450-1670) up to present day.
- The addition of informational plaques describing the vision, philanthropy, socioeconomic inclusion themes of Mary Emery.



# Overall Dale Park Plan



## Revitalization would include:

- Cover to protect statuary group
- Pathway connections within Dale Park and to other parks.
- Updated landscaping and an open lawn in front of statuary group.
- Placement of amphitheater in the Dale Park bowl with entrance plaza access from Plainville Road.
- Expansion of park by removing underbrush and volunteer plantings along creek

# A Natural Location Developed for Inspiring Performances

## Dale Park Amphitheater

Just below the Family Statuary Group in Dale Park is a valley that slopes down on three sides that creates a natural bowl to accommodate naturalized seating for an outdoor amphitheater.

- The amphitheater would include a stage and storage/dressing spaces.
- The amphitheater would also include electrical to accommodate a lighting grid and speaker/amplification.
- We anticipate that the amphitheater would be used by area schools including Mariemont City Schools, the Waldorf School, Good Shephard Montessori, and Cincinnati Public Schools and the local “School of Rock”.
- The amphitheater could also host performances by the Mariemont Players and artists from the Women’s Art Club.

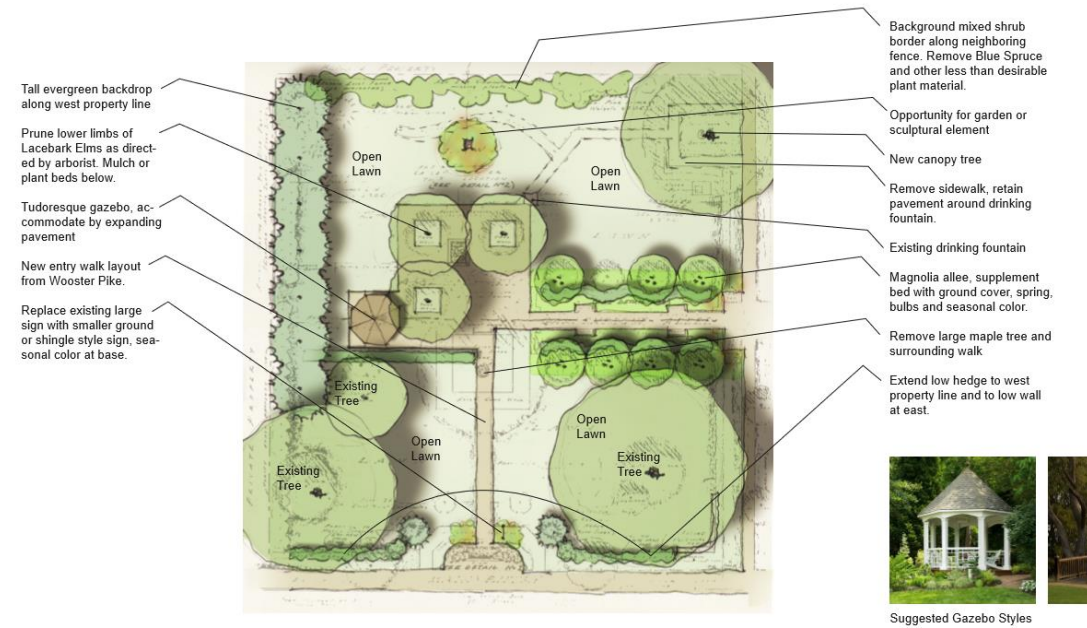
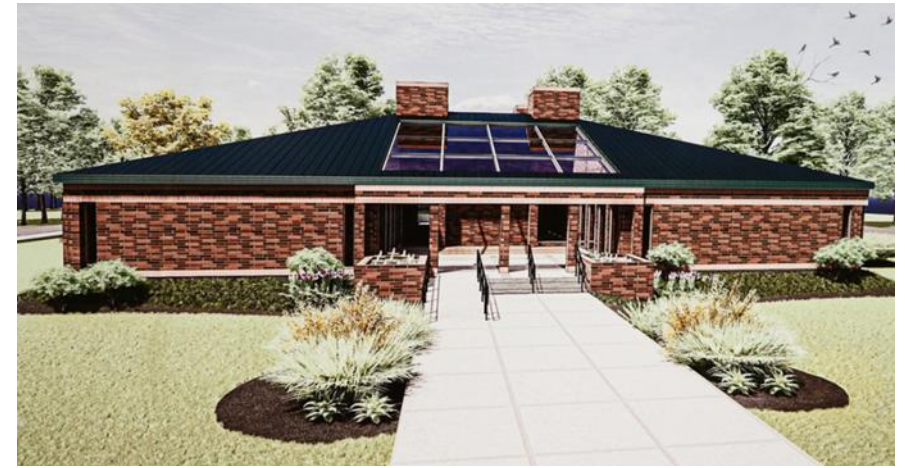




# Hopkins Park Repurposed as a Library Park

**Hopkins Park is located across the street from the Mariemont Branch of the Cincinnati Public Library. In 2022 the library completed a renovation that will include a three-season patio that will face Hopkins Park. The goal of the redesign of Hopkins Park is to repurpose as a library park with story walks, storytelling areas, and other amenities.**

- **Provide outdoor spaces for story telling, book walks, and other library events.**
- **Provide improved screening from Wooster Pike for safety and sound reduction.**
- **Placement of a gazebo focal point**





# Engaging Activities to Support the Centennial

## Centennial Projects Include:

- Commission and sale of limited edition Mariemont Centennial print.
- Partnership with local business on Centennial Specials and special events.
- Fundraising community events
- Mariemont Centennial signage at the Village Gateways and flags throughout the Village.
- The Rehabilitation of the 109 Historic Streetlights throughout the Village
- The updating and revitalization of the Village gateway signage





**An Extraordinary  
Vision Renewed.**