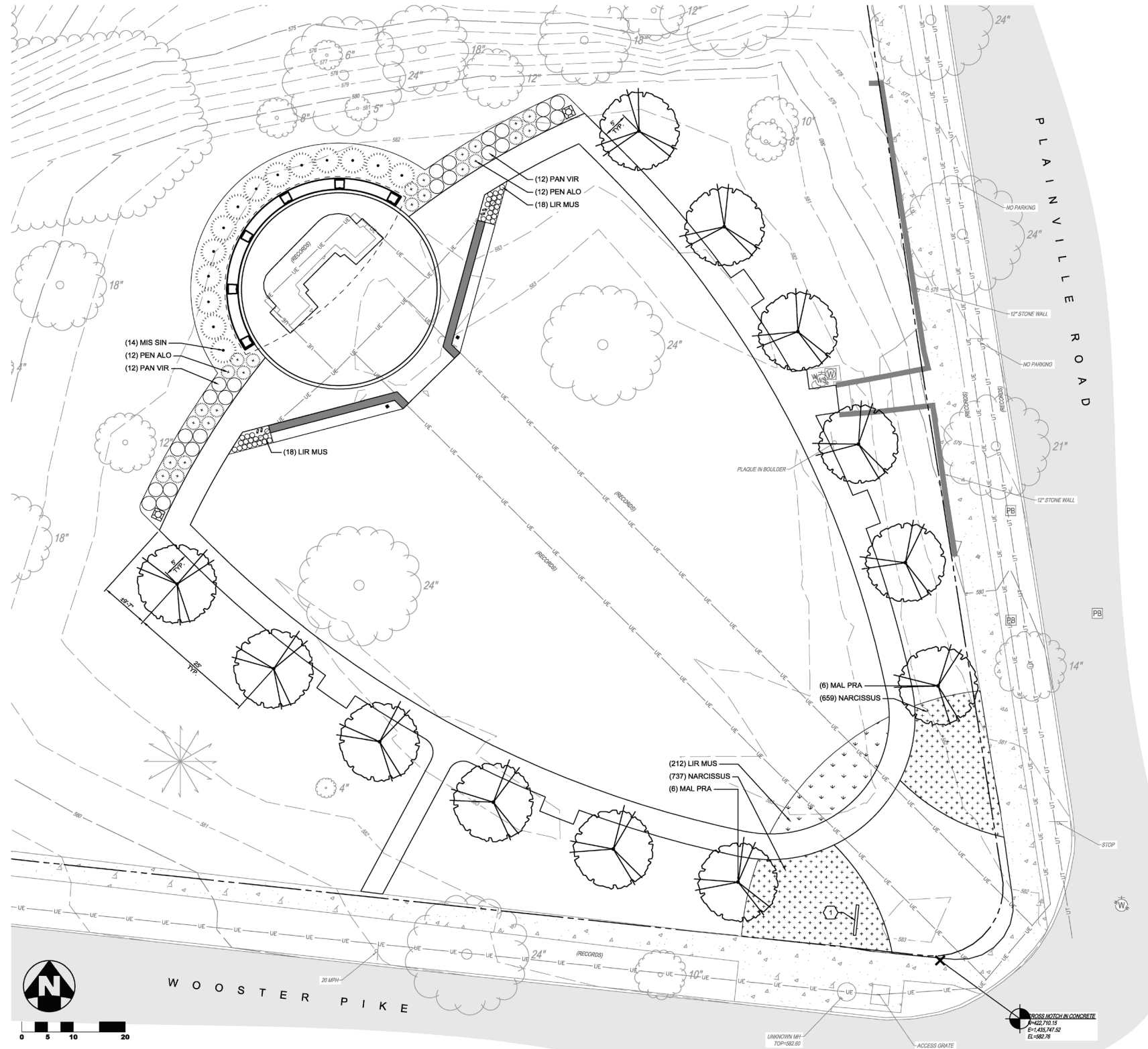




FAMILY STATUARY PRESERVATION - DALE PARK - VILLAGE OF MARIEMONT
ARB MEETING - LANDSCAPE DESIGN



- PLANTING NOTES**
1. EACH CONTRACTOR IS RESPONSIBLE FOR LOCATING AND PROTECTING ALL EXISTING UTILITIES.
 2. CONTRACTOR SHALL VERIFY ALL PLANTING CONDITIONS FOR OBSTRUCTIONS, EXISTING TREE CANOPY COVERAGE, AND OVERHEAD ELECTRICAL POWER LINES PRIOR TO PLANTING. IF ADVERSE PLANTING CONDITIONS ARE OBSERVED, CONTACT THE OWNERS REPRESENTATIVE IMMEDIATELY.
 3. ALL SHRUB MAASSES TO BE INCORPORATED BY A CONTINUOUS MULCH BED TO LIMITS SHOWN AND AS SPECIFIED. MULCH BEDS TO HAVE A NEAT, EDGED APPEARANCE. SUBSURFACE IMPROVEMENTS SHALL BE OBSERVED. THE CONTRACTOR SHALL CONTACT THE OHIO UTILITIES PROTECTION SERVICE (OUPS) 48 HOURS PRIOR TO ANY EXCAVATION OR DIGGING TO ENSURE THE LOCATION OF UNDERGROUND UTILITIES. IT SHALL BE THE CONTRACTOR'S RESPONSIBILITY TO PROTECT SUCH UNDERGROUND UTILITIES.
 4. ALL AREAS DISTURBED BY CONSTRUCTION SHALL BE FINE GRADED AND SEEDED.
 5. ALL TREES WITHIN A SPECIES SHALL HAVE MATCHING FORM.
 6. THE CONTRACTOR SHALL ENSURE THAT ALL NEWLY PLANTED TREES ARE PERFECTLY ALIGNED AND SET PLUMB WITH PROPER RELATIONSHIP TO THE SURROUNDING GRADE. CONFIRM FINISHED GRADE PRIOR TO PLANTING.
 7. ALL PLANT MATERIAL SHALL BE OF THE SIZE AND TYPE SPECIFIED. IF SUBSTITUTIONS ARE APPROVED BY THE OWNERS REPRESENTATIVE, THE SIZE AND GRADING STANDARDS SHALL CONFORM TO THOSE OF THE AMERICAN ASSOCIATION OF NURSERYMEN.

- CONSTRUCTION NOTES**
1. SIGN, SEE ARCHITECTURAL PLANS

LEGEND

— PROPERTY LINE

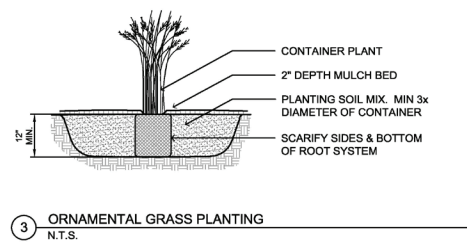
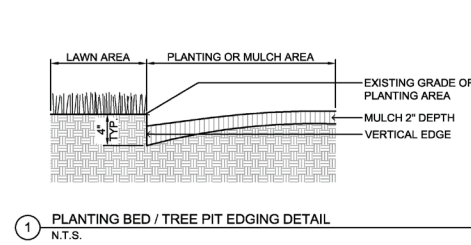
PLANT MATERIAL

DECIDUOUS TREE, TYP.

SHRUBS, PERENNIALS & ORNAMENTAL GRASSES, TYP.

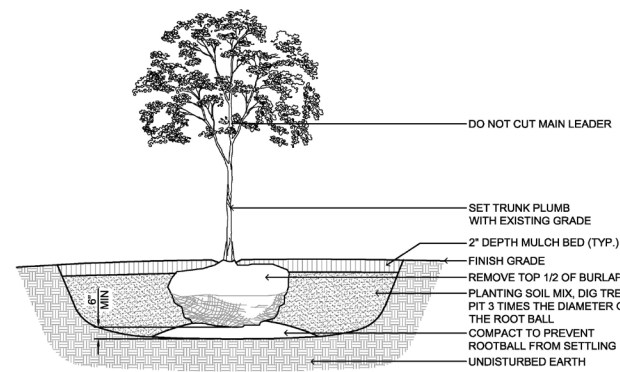
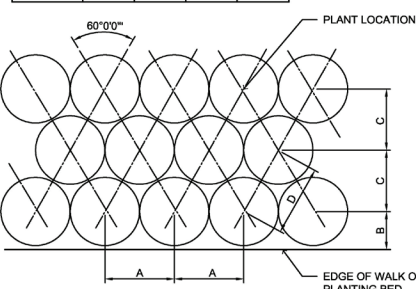
EXISTING TREES TO REMAIN, PROTECT IN PLACE

PLANT SCHEDULE				
KEY	BOTANICAL NAME	COMMON NAME	SIZE	ROOT
DECIDUOUS TREES:				
MAL PRA	MALUS PRARIFIRE	PRAIRIFIRE CRABAPPLE	4" CAL. MIN.	B&B MULTI-STEM
PERENNIALS AND ORNAMENTAL GRASSES:				
LIR MUS	LIRIOPE MUSCARY VARIGATA	VAREGATED LILY TURF	#1	CONT. PLANT 24" O.C.
MIS SIN	MISCANTHUS SINENSIS 'MORNING LIGHT'	MORNING LIGHT MAIDEN GRASS	#3	CONT. PLANT 80" O.C.
PAN VIR	PANICUM VIRGATUM 'SHENANDOAH'	SHENANDOAH SWITCH GRASS	#3	CONT. PLANT 36" O.C.
PEN ALO	PENNISETUM ALOPECUROIDES 'DESERT PLAINS'	DESERT PLAINS FOUNTAIN GRASS	#3	CONT. PLANT 36" O.C.
NARCISSUS	NARCISSUS 'ACCENT'	ACCENT DAFFODIL		BULB
NARCISSUS	NARCISSUS 'SALOME'	SALOME DAFFODIL		BULB
NARCISSUS	NARCISSUS 'CARLTON'	CARLTON DAFFODIL		BULB
TURFGRASS SEED: SEE SPECIFICATIONS				



SPACING	A	B	C	D
12"	12"	8"	10"	12"
18"	18"	8"	15"	18"
24"	24"	10"	20"	24"
30"	30"	15"	25"	30"
36"	36"	18"	31"	36"
48"	48"	21"	41"	48"

A = SPACING
B = SP/2
C = SP/1.2
D = SPACING



- NOTES:**
1. TOP OF ROOT BALL TO BE 2"-3" ABOVE ADJACENT FINISHED GRADE.
 2. REMOVE ALL LABELS, TAGS, OR OTHER FOREIGN MATERIALS FROM LIMBS.
 3. THE AMOUNT OF PRUNING SHALL BE LIMITED TO THE MINIMUM NECESSARY TO REMOVE DEAD OR INJURED TWIGS AND BRANCHES AND TO COMPENSATE FOR THE LOSS OF ROOTS DURING TRANSPORTING. RETAIN NORMAL SHAPE OF TREE. OWNERS REPRESENTATIVE WILL DETERMINE AMOUNT OF PRUNING NECESSARY. PLANT TREES AT SAME GRADE AS GROWN IN THE NURSERY.
 4. DO NOT STAKE AND GUY TREES UNLESS NEEDED FOR STABILITY BASED ON SITE CONDITIONS OR AS DIRECTED BY OWNERS REPRESENTATIVE.

LANDSCAPE PLAN



FAMILY STATUARY PRESERVATION - DALE PARK - VILLAGE OF MARIEMONT ARB MEETING - LANDSCAPE DESIGN



CARLTON DAFFODIL



ACCENT DAFFODIL



SALOME DAFFODIL



PRAIRIFIRE CRABAPPLE



VARIGATED LILY TURF



PLANT SCHEDULE

KEY	BOTANICAL NAME	COMMON NAME	SIZE	ROOT	REMARKS
DECIDUOUS TREES:					
MAL PRA	MALUS 'PRAIRIFIRE'	PRAIRIFIRE CRABAPPLE	4" CAL. MIN.	B&B	MULTI-STEM
PERENNIALS AND ORNAMENTAL GRASSES:					
LIR MUS	LIRIOPE MUSCARI 'VARIGATA'	VARIEGATED LILY TURF	#1	CONT.	PLANT 24" O.C.
MIS SIN	MISCANTHUS SINENSIS 'MORNING LIGHT'	MORNING LIGHT MAIDEN GRASS	#3	CONT.	PLANT 60" O.C.
PAN VIR	PANICUM VIRGATUM 'SHENANDOAH'	SHENANDOAH SWITCH GRASS	#3	CONT.	PLANT 36" O.C.
PEN ALO	PENNISETUM ALOPECUROIDES 'DESERT PLAINS'	DESERT PLAINS FOUNTAIN GRASS	#3	CONT.	PLANT 36" O.C.
NARCISSUS	NARCISSUS 'ACCENT' NARCISSUS 'SALOME' NARCISSUS 'CARLTON'	ACCENT DAFFODIL SALOME DAFFODIL CARLTON DAFFODIL		BULB	PLANT 9" O.C. MIX VARIETIES
TURFGRASS SEED: SEE SPECIFICATIONS					



FAMILY STATUARY PRESERVATION - DALE PARK - VILLAGE OF MARIEMONT
ARB MEETING - LANDSCAPE DESIGN



MORNING LIGHT MAIDEN GRASS



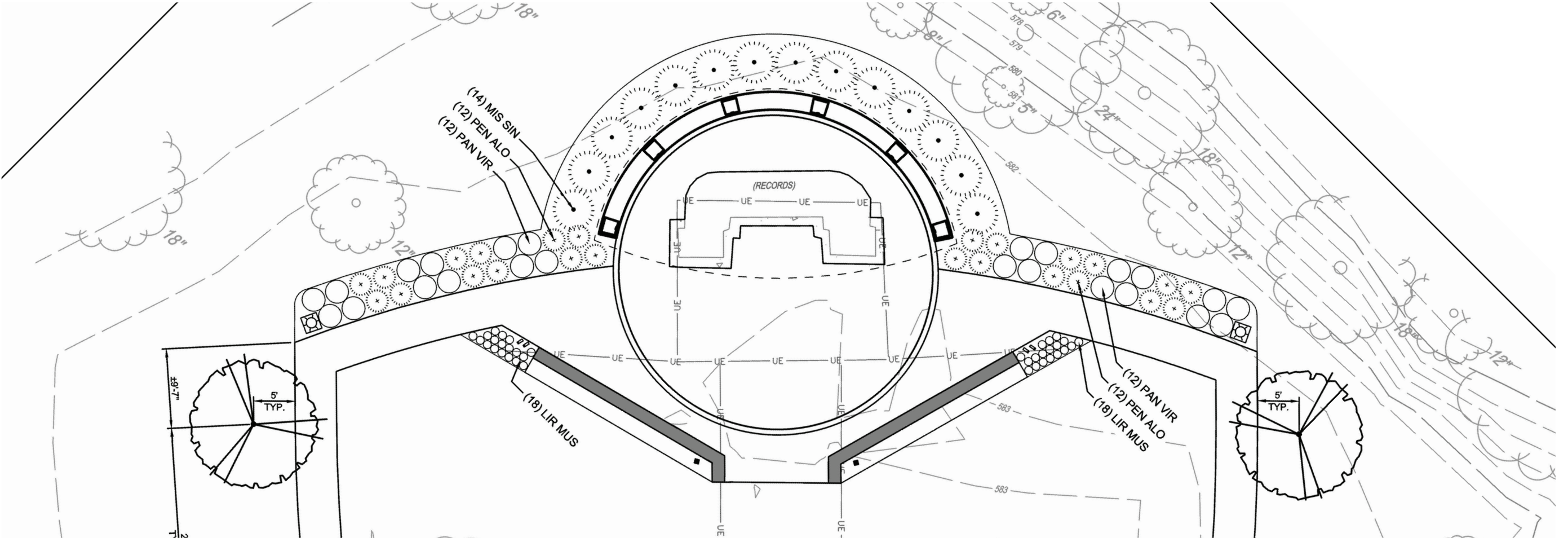
VARIGATED LILY TURF



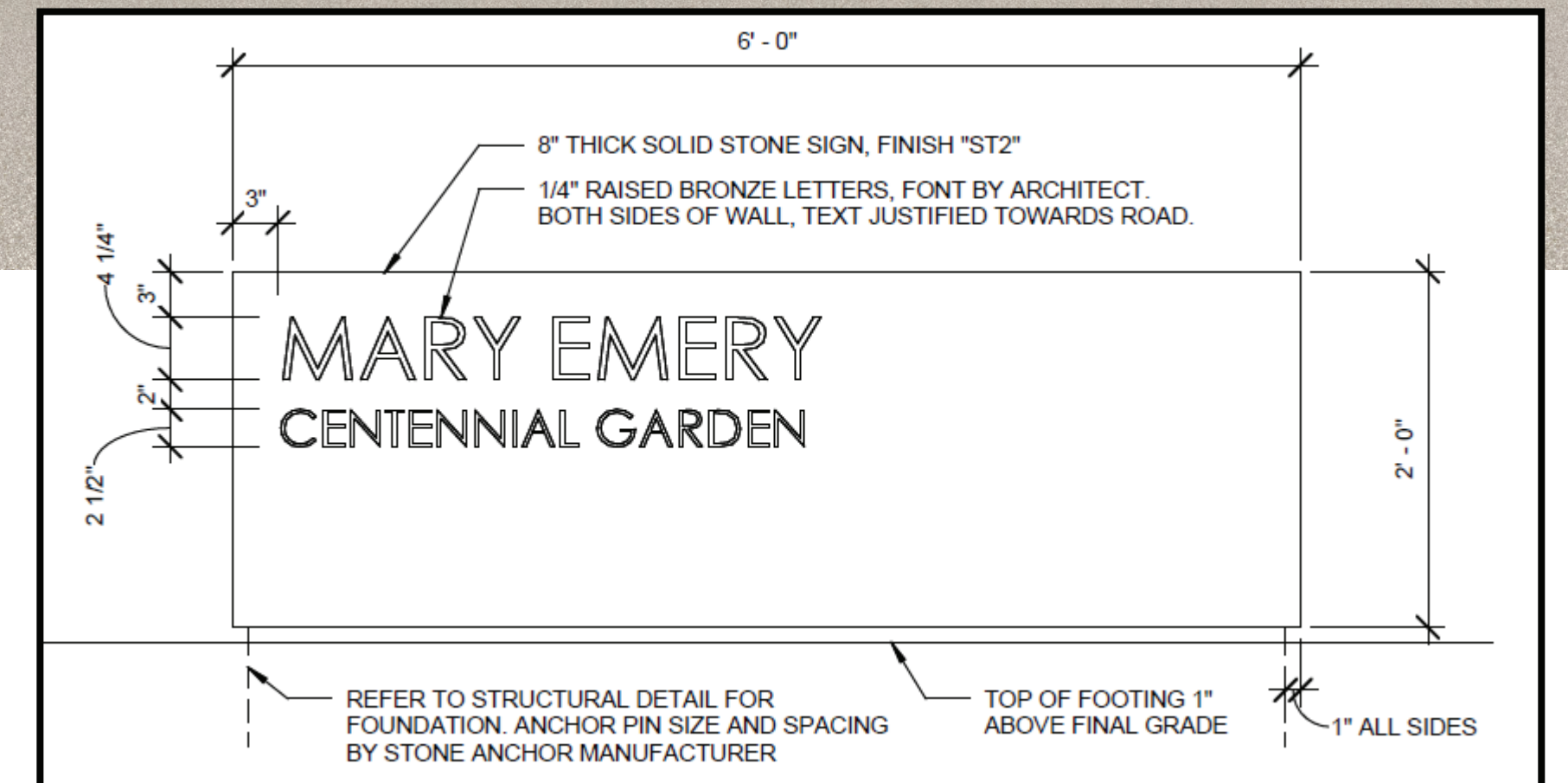
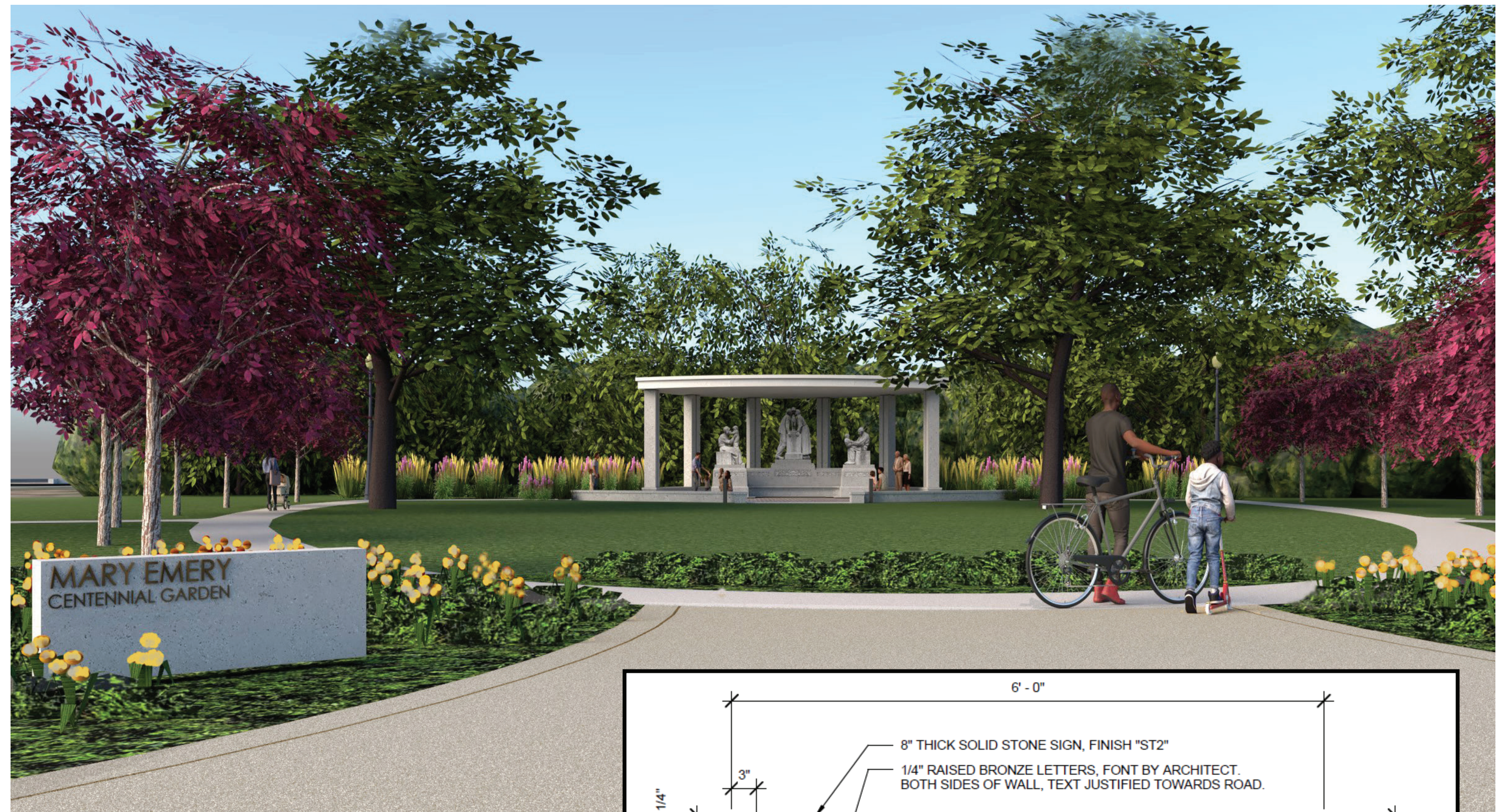
SHENANDOAH SWITCH GRASS



DESERT PLAINS FOUNTAIN GRASS

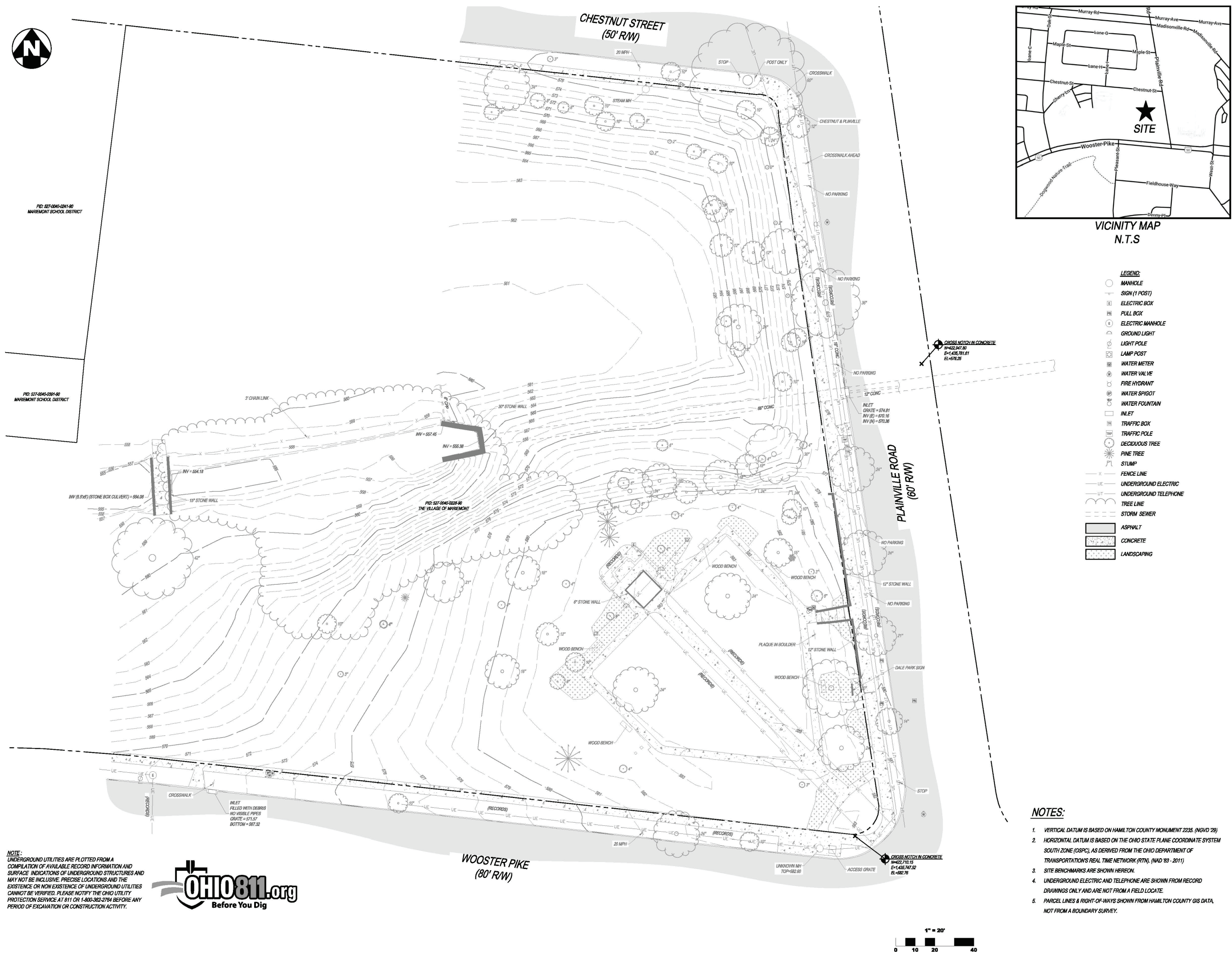


FAMILY STATUARY PRESERVATION - DALE PARK - VILLAGE OF MARIEMONT
ARB MEETING - LANDSCAPE DESIGN



FAMILY STATUARY PRESERVATION - DALE PARK - VILLAGE OF MARIEMONT

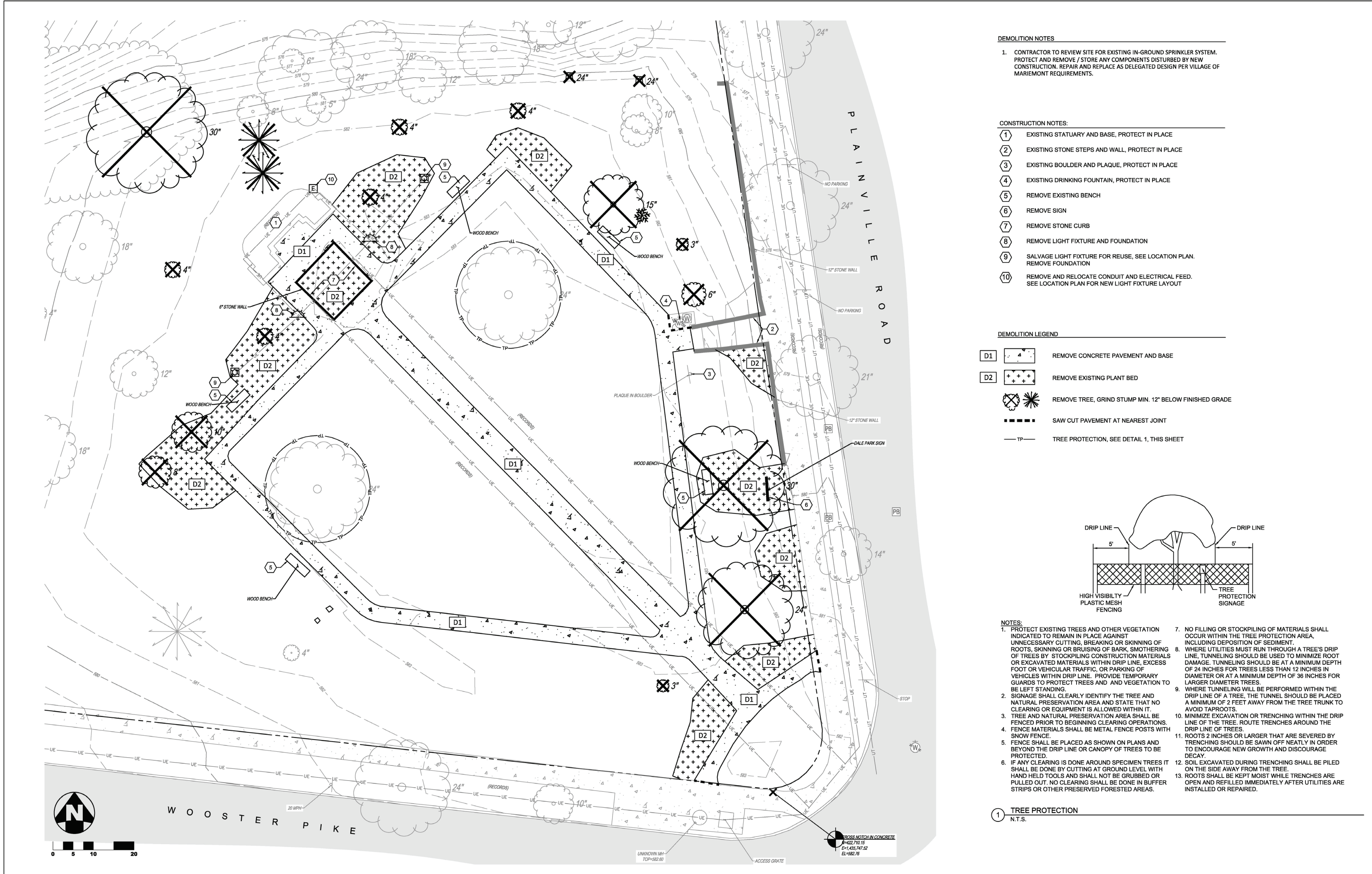
ARB MEETING - LANDSCAPE DESIGN



SURVEY



FAMILY STATUARY PRESERVATION - DALE PARK - VILLAGE OF MARIEMONT ARB MEETING - LANDSCAPE DESIGN

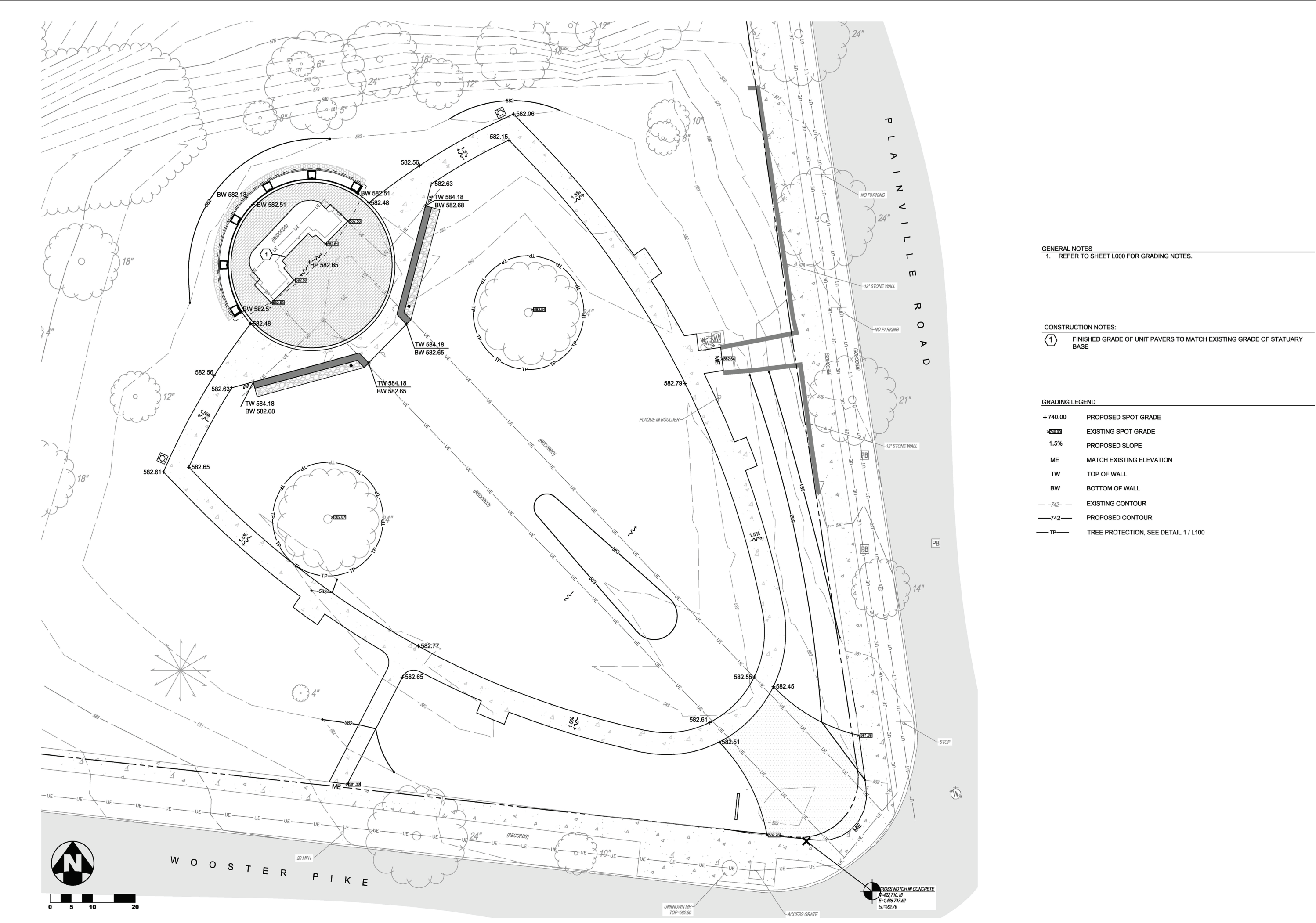


DEMO PLAN



FAMILY STATUARY PRESERVATION - DALE PARK - VILLAGE OF MARIEMONT

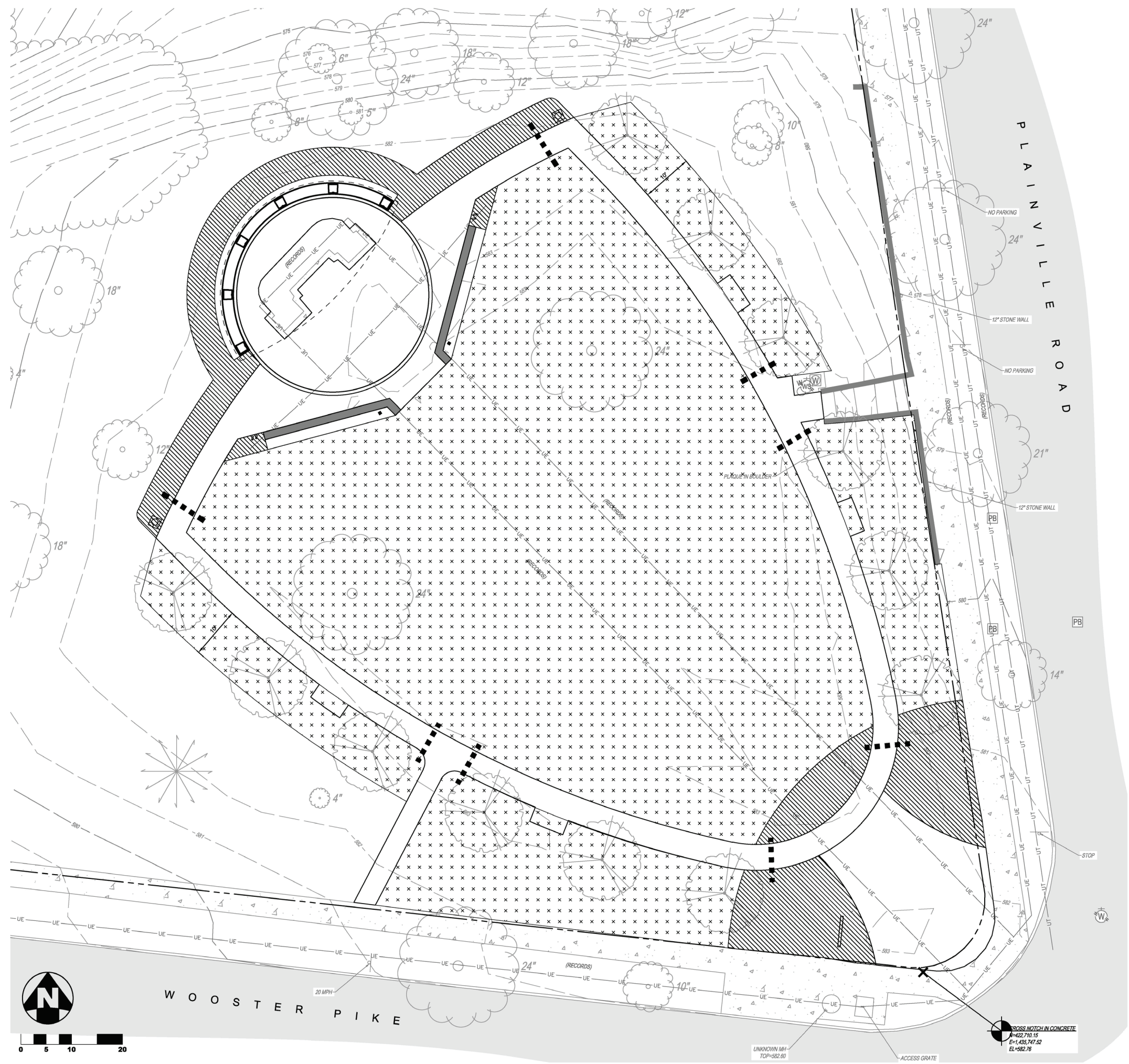
ARB MEETING - LANDSCAPE DESIGN



GRADING PLAN



FAMILY STATUARY PRESERVATION - DALE PARK - VILLAGE OF MARIEMONT ARB MEETING - LANDSCAPE DESIGN



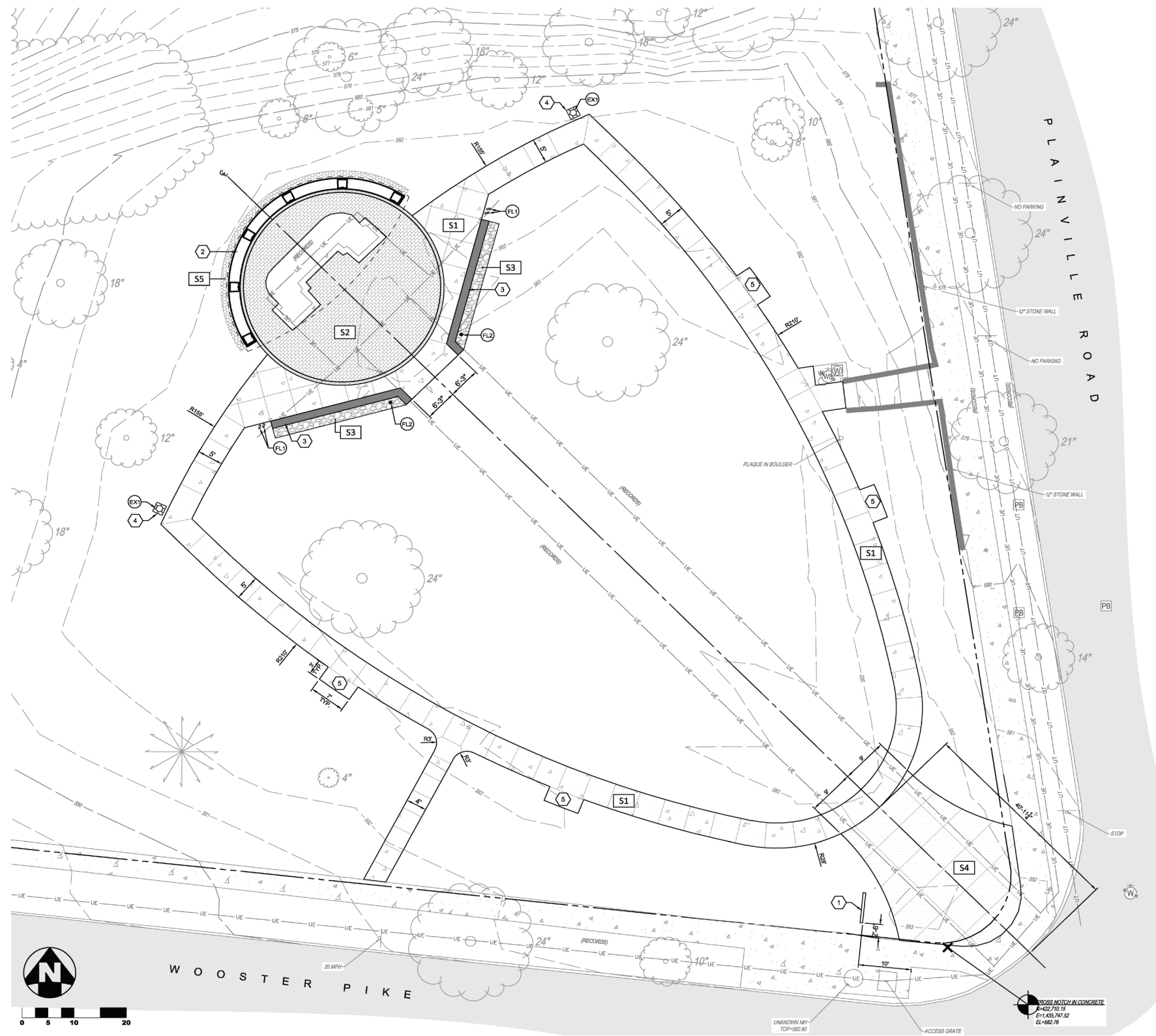
- IRRIGATION NOTES**
1. **BASE BID:** ADJUST EXISTING IRRIGATION SYSTEM TO REFLECT THE NEW IMPROVEMENTS. TIE NEW IRRIGATION COMPONENTS INTO EXISTING IRRIGATION SYSTEM.
 2. **ALTERNATE BID:** PROVIDE ENTIRELY NEW IRRIGATION SYSTEM, PROVIDING ALL REQUIRED SUBMITTALS, DOCUMENTATION, AND PERMITS.
- THE FOLLOWING NOTES APPLY TO BOTH BASE AND ALTERNATE BID OPTIONS:**
3. THIS IRRIGATION ZONE PLAN IS DIAGRAMMATIC AND ONLY SHOWS AREAS TO BE IRRIGATED. CONTRACTOR TO DESIGN SYSTEM TO ENSURE FULL IRRIGATION COVERAGE ON AREAS SHOWN TO BE IRRIGATED.
 4. THE IRRIGATION SYSTEM SHALL BE INSTALLED USING ACCEPTED AND QUALITY INSTALLATION STANDARDS AS USED IN THE INDUSTRY.
 5. IT IS THE RESPONSIBILITY OF THE IRRIGATION CONTRACTOR TO BE FAMILIAR WITH ALL GRADE DIFFERENCES, LOCATIONS OF WALLS, STRUCTURES, AND UTILITIES AND MAKE THE NECESSARY ADJUSTMENTS TO ACCOMMODATE THE IRRIGATION SYSTEM. ANY OBSTRUCTIONS SHOULD BE BROUGHT TO THE ATTENTION OF THE OWNER'S REPRESENTATIVE. IN THE EVENT THAT THIS NOTIFICATION IS NOT PERFORMED, THE IRRIGATION CONTRACTOR SHALL ASSUME FULL RESPONSIBILITY FOR ANY NECESSARY COSTS.
 6. MAINLINE PIPING SHALL BE BURIED WITH A MINIMUM OF 12" OF COVER AND A MAXIMUM OF 18" OF COVER. LATERAL LINE PIPING SHALL BE BURIED WITH A MINIMUM OF 12" OF COVER. ALL BACKFILL SURROUNDING THE PIPE SHALL BE SCREENED AND CLEANED OF MATERIAL LARGER THAN 1" IN SIZE.
 7. IRRIGATION CONTRACTOR SHALL PROVIDE FIRST WINTERIZATION AND SPRING TURN ON IN BID.
 8. IRRIGATION CONTRACTOR TO COORDINATE ALL SLEEVES NECESSARY TO BE CONSTRUCTED PRIOR TO PAVEMENT CONSTRUCTION.
 9. THE GENERAL CONTRACTOR IS RESPONSIBLE TO PROVIDE POWER TO THE IRRIGATION CONTROLLER, SET METER, ALL SLEEVES, TAP, BACKFLOW PREVENTION DEVICE AND TO GAIN ANY AND ALL PERMITTING. IRRIGATION CONTRACTOR TO COORDINATE ALL WORK WITH THE GENERAL CONTRACTOR.
 10. WATER FROM IRRIGATION SHALL NOT ENCRDACH ON PAVEMENTS OR SPRAY WALLS.
 11. ALL AREAS PLANTED WITH SHRUBS, PERENNIALS, AND ORNAMENTAL GRASSES SHALL USE DRIP TUBING. FOR PLANTING PLANS AND DETAILS, REFER TO LANDSCAPE PLAN.

- LEGEND**
- AREA TO RECEIVE DRIP IRRIGATION
 - AREA TO RECEIVE SPRAY IRRIGATION
 - PVC SLEEVES, TO BE TWICE THE SIZE OF THE IRRIGATION PIPE COORDINATE WITH PAVEMENT INSTALLATION

IRRIGATION ZONE



FAMILY STATUARY PRESERVATION - DALE PARK - VILLAGE OF MARIEMONT
ARB MEETING - LANDSCAPE DESIGN



- GENERAL NOTES:**
1. EACH CONTRACTOR IS RESPONSIBLE FOR LOCATING AND PROTECTING ALL EXISTING UTILITIES.
 2. SUBSURFACE IMPROVEMENTS SHALL BE OBSERVED. THE CONTRACTOR SHALL CONTACT THE OHIO UTILITIES PROTECTION SERVICE (OUPS) 48 HOURS PRIOR TO ANY EXCAVATION OR DIGGING TO ENSURE THE LOCATION OF UNDERGROUND UTILITIES. IT SHALL BE THE CONTRACTOR'S RESPONSIBILITY TO PROTECT SUCH UNDERGROUND UTILITIES.
 3. ALL CONCRETE FORMS SHALL BE FIELD STAGED AND APPROVED BY OWNER'S REPRESENTATIVE PRIOR TO CONCRETE INSTALLATION.
 4. ALL HORIZONTAL AND VERTICAL LAYOUT SHALL BE REVIEWED BY THE OWNER'S REPRESENTATIVE TO ENSURE GENERAL CONFORMANCE PRIOR TO CONSTRUCTION. PROVIDE ISOLATION JOINT WHERE CONCRETE PAVING ADJUTS BUILDINGS, COLUMNS, AND STRUCTURES. VERIFY COLOR OF SEALANT WITH OWNER'S REPRESENTATIVE.
 5. CONTRACTOR SHALL NOT WILLFULLY PROCEED WITH CONSTRUCTION AS DESIGNED WHEN IT IS OBVIOUS THAT UNKNOWN OBSTRUCTIONS, AREA DISCREPANCIES AND/OR GRADE DIFFERENCES EXIST THAT MAY NOT HAVE BEEN KNOWN DURING DESIGN. SUCH CONDITIONS SHALL BE IMMEDIATELY BROUGHT TO THE ATTENTION OF THE OWNER'S REPRESENTATIVE. THE CONTRACTOR SHALL ASSUME FULL RESPONSIBILITY FOR ALL NECESSARY REVISIONS DUE TO FAILURE TO GIVE SUCH NOTIFICATIONS.
 6. CONTRACTOR SHALL BE RESPONSIBLE TO CONSULT WITH SITE SUPERINTENDENT, APPROPRIATE AGENCIES, AND PLANS FOR LOCATION OF ALL UNDERGROUND UTILITIES, PIPES, AND STRUCTURES.
 7. CONTRACTOR TO REPORT TO ENGINEER ANY ADDITIONAL UTILITY LINES FOUND DURING CONSTRUCTION.
 8. CAD FILES SHALL BE PROVIDED TO THE CONTRACTOR FOR LAYOUT / STAKING PURPOSES.

- CONSTRUCTION NOTES:**
1. SIGN, SEE ARCHITECTURAL PLANS
 2. STATUARY CANOPY, SEE ARCHITECTURAL PLANS
 3. SEAT WALL, SEE ARCHITECTURAL PLANS
 4. RELOCATED LIGHT FIXTURE, FOUNDATION TO BE 6" FROM EDGE PAVEMENT
 5. CONCRETE BENCH PAD, CENTER BETWEEN PROPOSED TREES

LEGEND

— PROPERTY LINE

SURFACE ITEMS

S1	CONCRETE WALK, BUFF WASH FINISH, TYP.	1/2 1000'
S2	UNIT PAVING, TYP.	1 1000'
S3	AGGREGATE PAVEMENT, TYP.	3 1000'
S4	CONCRETE WALK, EXPOSED AGGREGATE FINISH, TYP.	1/2 1000'
S5	DRAINAGE AGGREGATE, TYP.	3 1000'

LUMINAIRE SCHEDULE

LABEL	QTY.	ARRANGEMENT	LLF	DESCRIPTION	LUM. WATTS	TOTAL WATTS	LUM. LUMENS
FL1	4	SINGLE	0.903	TARGETT BLT RP FE L2 SP 40-POWER SUPPLY TBD-PERMAPOST	12	48	790
FL2	2	GROUP	0.903	TARGETT LOC 8 AT L3 SP 40 FE TRIMLESS ANCHOR BASE - IN-GRADE J BOX (2 FLOODS)	12.4	49.6	947
EXT	2	SINGLE		EXISTING POST LIGHT / REINSTALL AT NEW LOCATION			

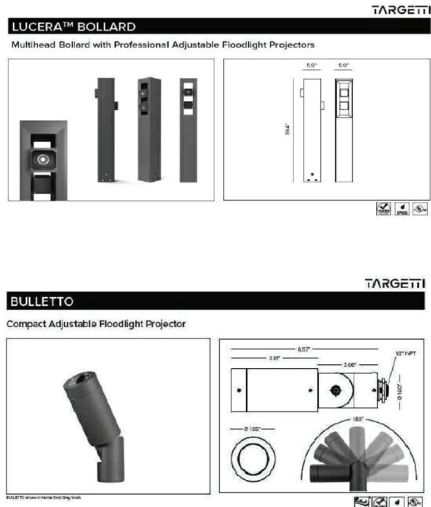
TYPE FL1 FLOOD ARE MOUNTED AT 0'-0".
TYPE FL2 ARE MOUNTED AT 7'-0" AND 3'-0" / TRIMLESS BASE INSTALL IN CONCRETE.
TYPE EXT - REMOVE / PROTECT AND STORE FOR RE-INSTALLATION AT NEW LOCATION.
REFERENCE VILLAGE OF MARIEMONT STANDARD FOR NEW LAMPS.

INSTALL FIXTURES PER MANUFACTURER'S RECOMMENDATIONS.

CONFIRM EXISTING POWER SUPPLY ON SITE / LOCATION AND EXTENT.
CONFIRM NEW REMOTE DRIVE LOCATIONS AND POWER SUPPLY REQUIREMENTS.

CONTRACTOR TO DELEGATE ELECTRICAL ENGINEERING TO A LICENSED CONTRACTOR FOR REVIEW OF SITE POWER SUPPLY AND INSTALLATION OF NEW AND REINSTALLED FIXTURES

CONTRACTOR TO PROVIDE SIGNED AND SEALED DRAWINGS FOR APPROVAL PRIOR TO CONSTRUCTION.



LOCATION PLAN



FAMILY STATUARY PRESERVATION - DALE PARK - VILLAGE OF MARIEMONT

ARB MEETING - LANDSCAPE DESIGN