

Village of Mariemont Tree Advisory Board

Date | time 7/14/2021 3:00 PM | *Location* Microsoft Teams

Meeting called by John Scherpenberg
Type of meeting Monthly Meeting
Chair Barb Whittaker
Vice-Chair Kristin Van Scoy
Secretary Jason Brownknight

Attendees - Marcy Lewis, Mary Beth York, Margaret Jevic, John Bentley, and Ginger Kelly

Guest - Wendi Van Buren, ODNR Urban Forester
John Scherpenberg, Village Superintendent

Agenda Items

Welcome John Scherpenberg, Mariemont Superintendent

Roll Call Barb Whittaker, Chair

Minutes – review and approval Barb Whittaker, Chair

Old Business

	Presenter	Time allotted
<input type="checkbox"/> 2021 Historic Tree Planting Project ~ Chestnut Street	Jason Brownknight	15 Minutes
<input type="checkbox"/> Education Campaign Leads – chose 2	Margaret Jevic	15 Minutes
<input type="checkbox"/> TCA Homework Project	Barb, Kristin, Marcy, and Mary Beth	15 Minutes

New Business

	Presenter	Time allotted
<input type="checkbox"/> Watering New Trees	Group Discussion	5 Minutes
<input type="checkbox"/> Removing Stakes & Tree Protection on New Trees	Group Discussion	5 Minutes
<input type="checkbox"/> Invasive Removal Grants	Jason Brownknight	5 Minutes

Adjournment & Next Meeting Date /Time John Scherpenberg, Mariemont Superintendent

July 14, 2021 Village of Mariemont Tree Advisory Board Meeting Notes

Attendees + Monthly Volunteers Hours

Voting Members: Barb Whittaker (10 hours), Mary Beth York (11 hours), Marcy Lewis (7 hours), Kristin Van Scoy (20.5 hours) and Jason Brownknight (30 hours)

Non-voting Members: Margaret Jevic (3 hours), Ginger Kelly (3 hours), and John Bentley (3 hours)

Guests: Wendi Van Buren (ODNR) and John Scherpenberg (Village of Mariemont Superintendent)

- Meeting was called to order by John S. at 3:08 pm eastern standard time.
- Barb W. took roll call (see above attendee list with previous month's volunteer hours)
- Barb W. began the meeting by introducing several new items for discussion:
 - Barb asked if there is a plan for watering newly planted trees within the Village, and if there was anyway volunteers can help with this effort?

John S. noted that tree bags will be installed on newly planted trees later this month or whenever the volume of rain begins to decrease. John S. also noted the Village is equipped with two water tanks (500 and 100 gallon) that are used for watering and will be operated by Village maintenance staff. John S. noted that it is currently easier for Village staff to water the trees due to their efficiency utilizing the 500 gallon water tank that is safely stored and transported within a Village maintenance vehicle.

- Barb noted there are several young street trees in the Village with tree guards that are too tight and are impacting the health of the tree. Barb asked if these could be removed.

John S. responded that these can be removed and requested the Advisory Board contact him to schedule a time to work with Village staff to located and remove tree guards and/or guide rods that are negatively impacting Village street trees. Barb W. will follow up with John S. regarding this issue.

- Barb inquired about fall Town Crier articles and if we have a plan and commitment for article development and submittal.

Margaret noted that the deadline for article submittal for the September Town Crier is August 10th. Margaret recommended we develop a list of what articles to publish and when. Margaret, Marcy, and Kristin volunteered to work toward developing an article for the September Town Crier.

John S. recommended our September article be focused on introducing the Advisory Tree Board to the Village.

- Jason proposed to postpone discussion regarding grants for ecological restoration.
- Barb W. gave a summary on an upcoming Tree Commission Academy (TCA) homework assignment that she, Mary Beth, Kristin, and Marcy are working on with Wendi.
 - Barb noted the goal of the TCA assignment is to utilized tools and resources (e.g., Urban Site Index) taught by ODNR's TCA to develop a street tree planting plan for District 6 in the Village. Lessons learned can assist with the development of a Village wide Street Tree Plan. Kristin gave a general summary about the TCA program.

Wendi noted that an in-person course will be offered during the fall of 2021 and if any Advisory Board members were interested to contact her.

- Jason opened discussion regarding the Chestnut Street Tree Planting Plan.
- Jason began by noting that the proposed alternate plant was sent out to the Tree Board on July 13th. The alternate plan proposes planting 13 *Quercus muehlenbergii* (commonly known as Yellow Chestnut Oak or Chinkapin Oak) in lieu of the originally proposed *Aesculus x carnea* (commonly known as Red horse-chestnut). Both species are considered medium sized shade trees and are both suitable to 6 to 7 foot wide street tree lawn planting areas. Jason noted that one of the reasons for not selecting *Aesculus x carnea* is due to its susceptibility to the Asian Long-horned beetle (*Anoplophora glabripennis*).
 - A summary of the key principles for selecting *Quercus muehlenbergii* over *Aesculus x carnea* were provided by Jason during submittal of the alternate plan on July 13th. Jason asked if anyone had any questions regarding the proposed alternate plan and/or regarding the reasons for selecting *Quercus muehlenbergii*.
 - The planting plan also proposed trees for two concrete cut-out areas, tree lawn areas less than 4 feet, and Fountain Park.
 - Mary Beth York asked if there was a cost differences between selecting between the two species. Jason noted that information is yet to be gathered and he will follow up with John and the group regarding availability and costs. It is estimated the cost for *Quercus muehlenbergii* will be the same or less than *Aesculus x carnea*.
 - John S. noted that Northern red oaks were chosen as replacements for the Pin oak based on availability of oak tree species at the time.
 - Wendi noted that *Quercus muehlenbergii* is a medium-sized tree and therefore suitable for 6 to 7 foot tree lawn planting spaces.
 - Margaret noted that we will have to continue to consider both impacts to sidewalks from street trees and impacts to street trees from sidewalks. One size does not seem to fit all scenarios within the Village based on observations of street trees.
 - Ginger e suggested that we need to develop a collective list of what trees are suitable to plant within the Village. She noted the devastating impact to the Village when the emerald ash borer (EAB) (*Agrilus planipennis*) arrived. Wendi noted that if ALB was discovered in are adjacent to the Village that it would have a devastating impact to our trees due to the amount of maple trees and other host species located within Village limits. Currently ALB has not been recorded within an impact area to the Village. The closest infestation is located in Clermont County approximately twenty-miles of the Village.
 - This led to a discussion regarding the selection of ALB host trees and monitoring of current host trees. It was agreed by all that we need to continue this discussion and strongly consider invasive insects and other threats to trees when determining which species to plant and where. Wendi noted that the recommendation is not to plant greater than 5% of ALB host species (e.g., maples, buckeyes, sycamores, elm, etc.). Wendi noted the standard for urban forestry planting is no more than 30% of a tree family, no more than 20% of a tree genus, and no more than 10% of a tree species across the community. These percentages should be adjusted based on high risk species and proximity to threats to these species (e.g., Oak wilt, ALB, etc.).
 - Margaret brought the need for selecting trees or trimming trees that do not obstruct sidewalks or roadways. Wendi noted the process to address this issue is called young tree structure pruning and is done in years 3, 6, 9, and 12 on newly planted trees. This process promotes tree health, tree structure, and canopy height. Typically the bottom-third of a tree can be limbed up. This process is imperative and we will need volunteers to help with the process.
 - John B. noted he thought a columnar oak variety should not be selected for cut-out areas in front of the Waldorf School or within other cut-out areas along Chestnut Street.
 - Mary Beth York brought up concerns regarding planting the two Chestnut Oaks near Fountain Park. It was suggested that we may not need large shade trees in those locations but rather

smaller trees that can accent the park rather than large shade trees that could impact the Village Christmas tree which already has a northern red oak and a large pin oak nearby.

- It was motioned by Kristin to vote on either selecting *Quercus muehlenbergii* (yellow chestnut oak/chinkapin oak) or *Aesculus x carnea* (red horse-chestnut).

Votes were as followed:

a) *Quercus muehlenbergii* (yellow chestnut oak/chinkapin oak)
John B., Margaret, Mary Beth, Kristin, Jason, Barb, and Marcy

b) *Aesculus x carnea* (red horse-chestnut)

- It was motioned by Kristin to postpone the decision on concrete cut-out areas, small areas, and the two proposed areas near Fountain Park along Chestnut Street. It was unanimously voted to postpone tree selection and planting in these areas.
- The minutes were approved from the June meeting.
 - The next meeting will be August 11th at 3pm on Microsoft Teams.
 - Tree pruning workshop will be held in Mariemont on October 28th from 9am to noon.
 - John S. spoke about issues with some of the large pin oaks along Chestnut Street. Two large pin oaks in particular have been assessed by Davey Tree Co. as in fair condition and are being assessed for potential removal. Opportunities for funding assistance with removal may be possible. John S. to follow-up.
 - Meeting was adjourned at 4:27pm

ATTACHMENTS

Chestnut Street (East of Oak St.) 2021 Tree Planting Plan {for available medium sized (6 to 7 foot) street tree lawn spaces}.

Chestnut Street (West of Oak St.) 2021 Tree Planting Plan {for available medium sized (6 to 7 foot) street tree lawn spaces}.



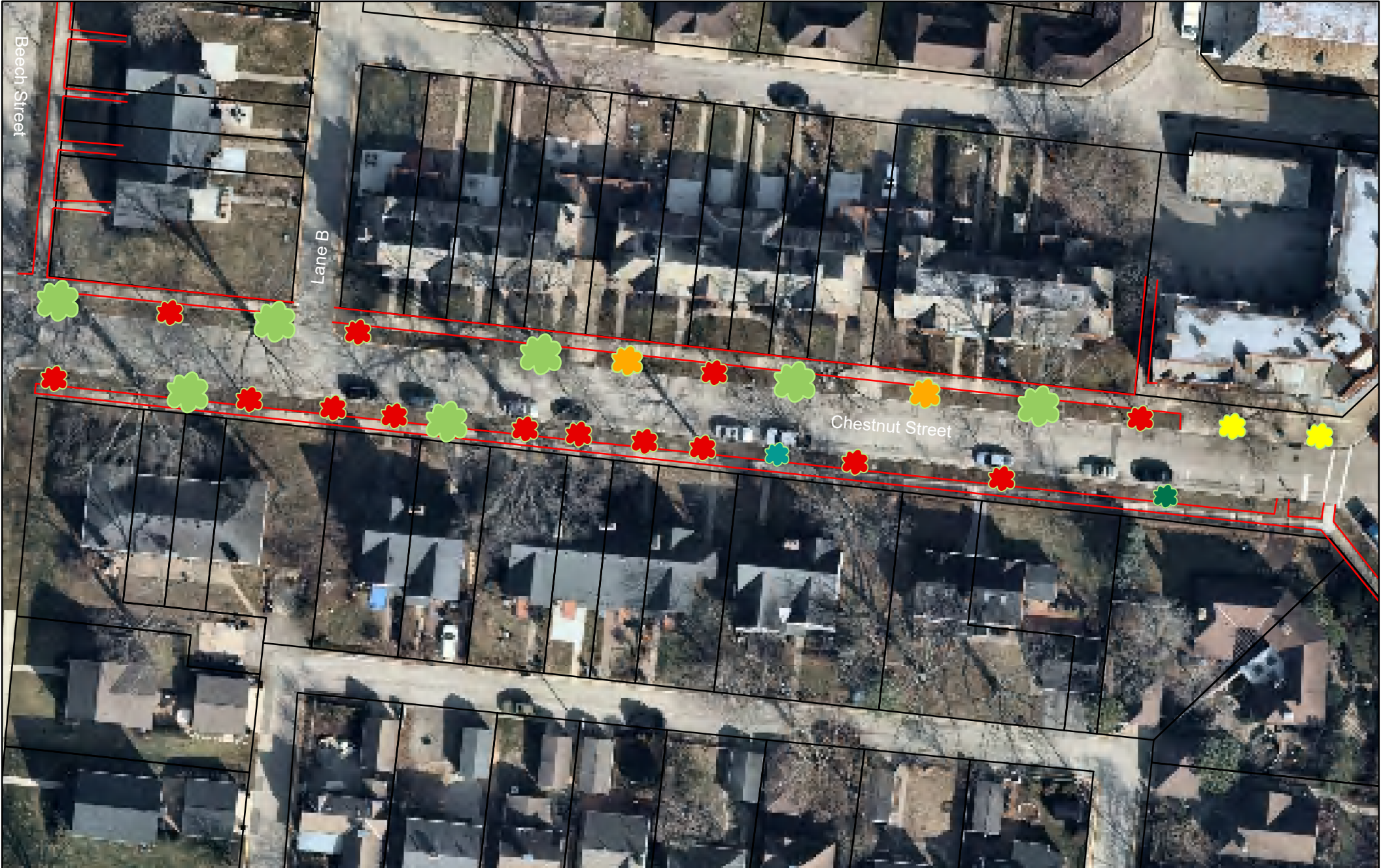
Chestnut Street Tree Planting Plan 2021 (East)

Map created by: Jason Brownknight
 Data Sources: CAGIS, OSIP, ESRI, Garmin GPS
 Map created for Village of Mariemont Advisory Tree Board
 Map for reference only
 dbh = diameter at breast height

Legend

- Sidewalks
- ✿ Pin Oak (>35 inches dbh)
- ✿ Yellow Chestnut Oak (to be planted) {also known as chinkapin oak}
- ✿ Callery Pear (<22 inches dbh)
- Parcels
- ✿ N. Red Oak (<20 inches dbh)
- ✿ Crabapple sp. (<10 inches dbh)





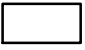



100
 Feet



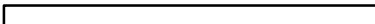
Chestnut Street Tree Plan 2021 (West)

Map created by : Jason Brownknight
 Data Sources: CAGIS, OSIP, ESRI, Garmin GPS
 Map created for Village of Mariemont Advisory Tree Board
 Map for reference only
 dbh = diameter at breast height

Legend

- | | | | |
|--|--|---|---|
|  Sidewalks |  Pin Oak (>35 inches dbh) |  N. Red Oak (<20 inches dbh) |  Swamp White Oak (<5 inches dbh) |
|  Parcels |  Yellow Chestnut Oak (to be planted)
{also known as Chinkapin oak} |  Callery Pear (<20 inches dbh) |  Am. Hophornbeam (<5 inches dbh) |

100

 Feet

